

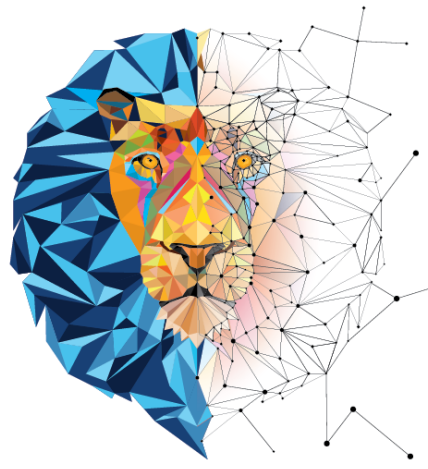


CONNECTING THE DOTS BETWEEN DESIGN, MANUFACTURING, AND QUALITY ENGINEERING

Confidence

Avoid costly calculation mistakes.

Rest assured T360 is watching your back, even with frequent R&D changes.



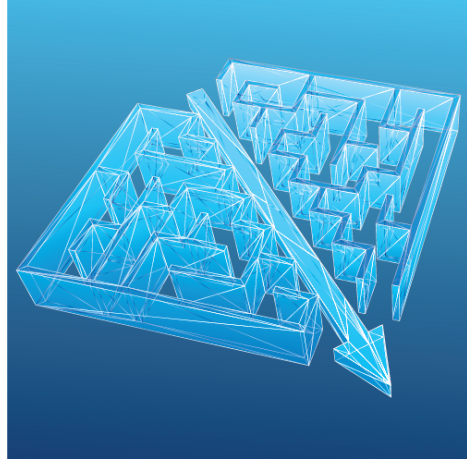
T360 Highlights

- Bring products to market faster
- Reduce cost, attain higher quality
- Gain confidence in calculations
- Save hundreds of hours
- FAI, Workflow, Auto-update, Analytics
- Easy to use software

Shortcut

Quickly Resolve design issues.

Use our Virtual Parts and Virtual Dimension tools instead of going back to the drawing board.



Self-Renewal

Do it once and be done forever.

Save hundreds of hours with automatic tolerance stack calculations.

Higher Quality

Get a better product, faster.

T360 checks for calculation mistakes, removes error-prone manual steps, and integrates FAI reporting.



One Truth

Avoid Confusion.

Utilize a centralized database for all collaborators to keep everyone on the same page.

Workflow

Streamline your project.

Streamline the entire process, from design changes to FAI reporting.



Analytics

Say hello to your extra brain.

It's like having another person on the team to take care of What-If, Monte-Carlo, and Sensitivity Contribution analytics.



Contact:

David Jolley

djolley@tolerance360.tech

+1.513.942.7752